

## MIT Burton Conner - Corridor Artwork Allowance: Burton 1

20% of the surface area of a wall with picture rail can be covered in hanging artwork.

Typical  
Canvas  
Size

|             |       |
|-------------|-------|
| 16.65<br>SF | 5'-0" |
| 3'-4"       |       |

Picture Rail Locations

Potential Canvas Locations

7 canvases  
allowed on this wall

First Floor Burton: East Corridor Elevation

Total SF of this  
wall: 136 SF  
1 canvas  
allowed here

Total SF of this  
wall: 302 SF  
3 canvases  
allowed here

2 canvases  
allowed on this wall

First Floor Plan - Burton

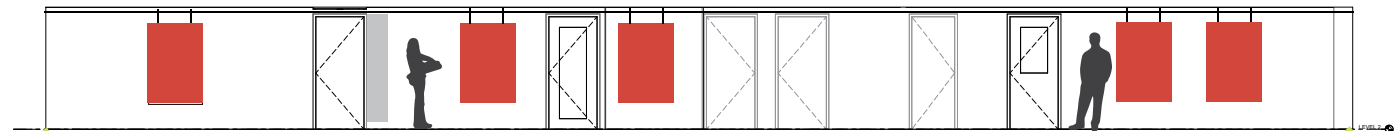
## MIT Burton Conner - Corridor Artwork Allowance: Conner 2

20% of the surface area of a wall with picture rail can be covered in hanging artwork.

Typical  
Canvas  
Size

|             |       |
|-------------|-------|
| 16.65<br>SF | 5'-0" |
| 3'-4"       |       |

- Picture Rail Locations
- Potential Canvas Locations



Second Floor Conner: North Corridor Elevation

Total SF of this wall: 139 SF  
(without windows)  
**1 canvas** allowed on this wall

Total SF of this wall: 139 SF  
(without windows)  
**1 canvas** allowed on this wall

Total SF of this wall: 480  
SF (without doors)  
**5 canvases** allowed here

Total SF of this  
wall: 73 SF  
**1 smaller  
canvas** allowed  
on this wall

Total SF of this  
wall: 287 SF  
**3 canvases**  
allowed here

Total SF of this wall (Conner  
Side): 178 SF  
**2 canvases** allowed on this wall

Total SF of this wall (Burton  
Side): 259 SF  
**3 canvases** allowed on this wall

Second Floor Plan - Conner